

## NOTABLE FEATURES & UPGRADES

- 30 YEAR ARCHITECTURAL SHINGLES
- PREMIUM VINYL SIDING
- STEEL FRONT DOOR
- PREFINISHED HARDWOOD FLOORING
- TILE FLOORING
- SIDE BY SIDE REFRIGERATOR
- SMOOTH TOP RANGE
- COMBO MICROWAVE VENT HOOD
- ENERGY STAR® APPLIANCES
- DELUXE MASTER BATH
- BRUSHED NICKEL LIGHT FIXTURES, DOOR & WINDOW HARDWARE, CEILING FANS
- STAINED OAK CABINETS
- PROGRAMMABLE THERMOSTAT
- HIGH EFFICIENCY WATER HEATER

# THE JEFFERSON



46' X 39' - 4 BEDROOM - 2 1/2 BATH (APPROX. 1708 HEATED SQ. FT.)



PLANS PROVIDED BY:  
**FOLLOWING SEAS LLC.**  
 14948 SHERWOOD DRIVE  
 GREENCASTLE, PA 15225  
 (717) 471-3996

NOTES/CONDITIONS

STAMP/SIGNATURE

MODEL: JEFFERSON	FOL 250	FT.	DOB

COPYRIGHT NOTICE  
 THIS DRAWING IS THE PROPERTY OF FOUR POINTS CONSTRUCTION, INC. NO REUSE, REPRODUCTION, OR ALTERATION IS PERMITTED WITHOUT THE WRITTEN CONSENT OF FOUR POINTS CONSTRUCTION, INC. ANY REUSE, REPRODUCTION, OR ALTERATION WITHOUT THE WRITTEN CONSENT OF FOUR POINTS CONSTRUCTION, INC. IS STRICTLY PROHIBITED.

**Four Points**  
 CONSTRUCTION, INC.  
 105 S. MOORE  
 MARTINSBURG, WV 25405  
 (717) 304-9000  
 WWW.FOURPOINTSINC.COM

#	DATE	DESCRIPTION
1		
2		
3		
4		

DATE: \_\_\_\_\_  
 DRAWN BY: \_\_\_\_\_  
 PROJECT: \_\_\_\_\_  
 SHEET: \_\_\_\_\_



PLANS PROVIDED BY:  
**FOLLOWING SEAS LLC.**  
 14948 SHERWOOD DRIVE  
 GREENCASTLE, PA 15225  
 (717) 717-4913-3996

NOTES/CONDITIONS

STAMP/SIGNATURE

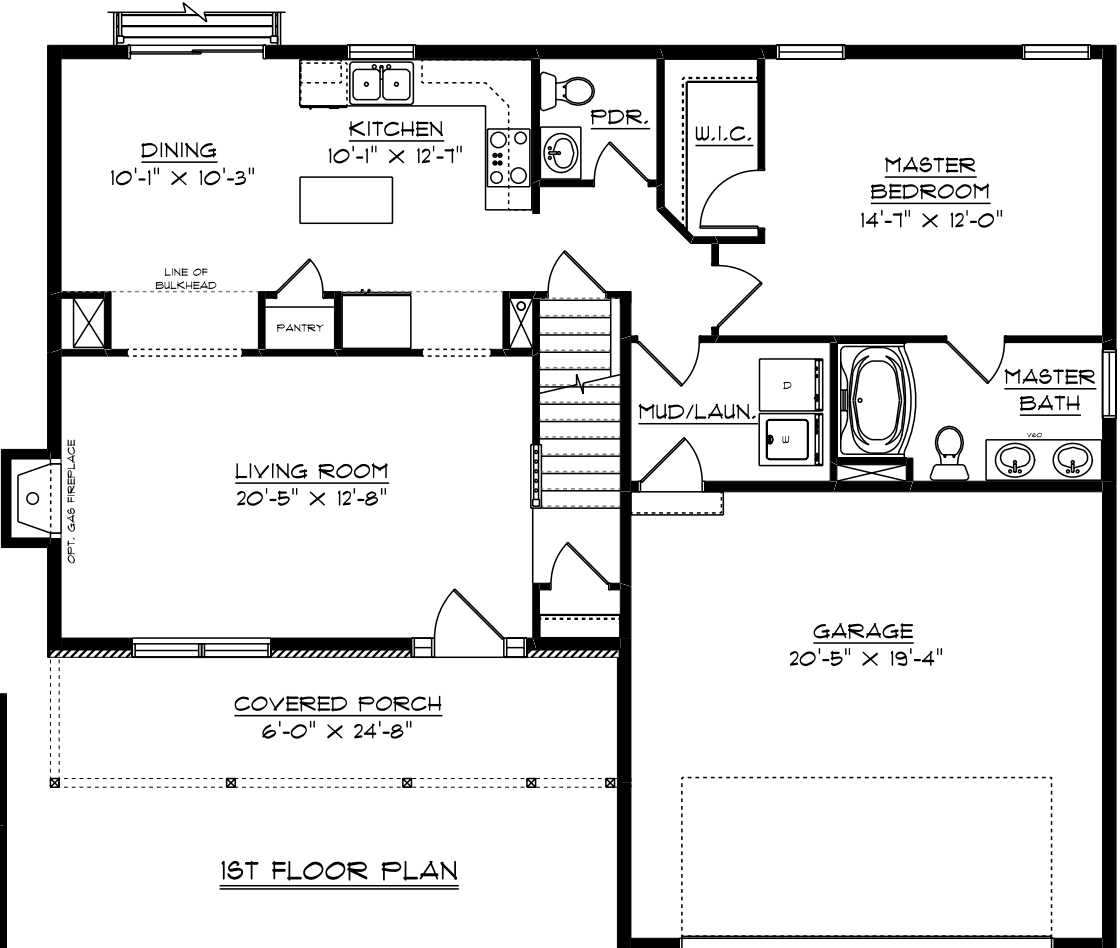
MODEL: JEFFERSON	FIN: 250 FT. - 105

**COPYRIGHT NOTICE**  
 THIS ENGINE DRAWING IS THE PROPERTY OF FOUR POINTS CONSTRUCTION, INC. NO REPRODUCTION OR TRANSMISSION OF THIS DRAWING IS PERMITTED WITHOUT THE WRITTEN CONSENT OF FOUR POINTS CONSTRUCTION, INC. ANY REPRODUCTION OR TRANSMISSION OF THIS DRAWING WITHOUT THE WRITTEN CONSENT OF FOUR POINTS CONSTRUCTION, INC. IS STRICTLY PROHIBITED. ANY REPRODUCTION OR TRANSMISSION OF THIS DRAWING WITHOUT THE WRITTEN CONSENT OF FOUR POINTS CONSTRUCTION, INC. IS STRICTLY PROHIBITED.

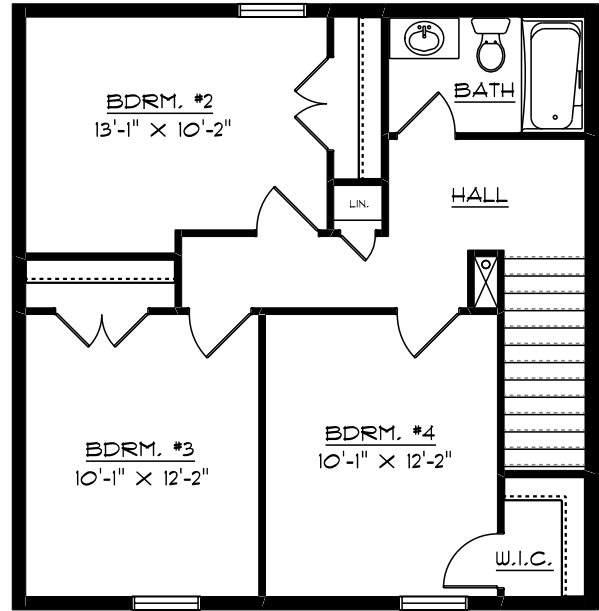
**Four Points**  
 CONSTRUCTION, Inc.  
 105 S. MOON  
 MARTINSBURG, WV 25405  
 (717) 304-2648-888  
 WWW.FOURPOINTSINC.COM

#	DATE	DESCRIPTION
1		
2		
3		
4		

DATE: \_\_\_\_\_  
 DRAWN BY: \_\_\_\_\_  
 PROJECT: \_\_\_\_\_  
 SHEET: \_\_\_\_\_



1ST FLOOR PLAN



2ND FLOOR PLAN